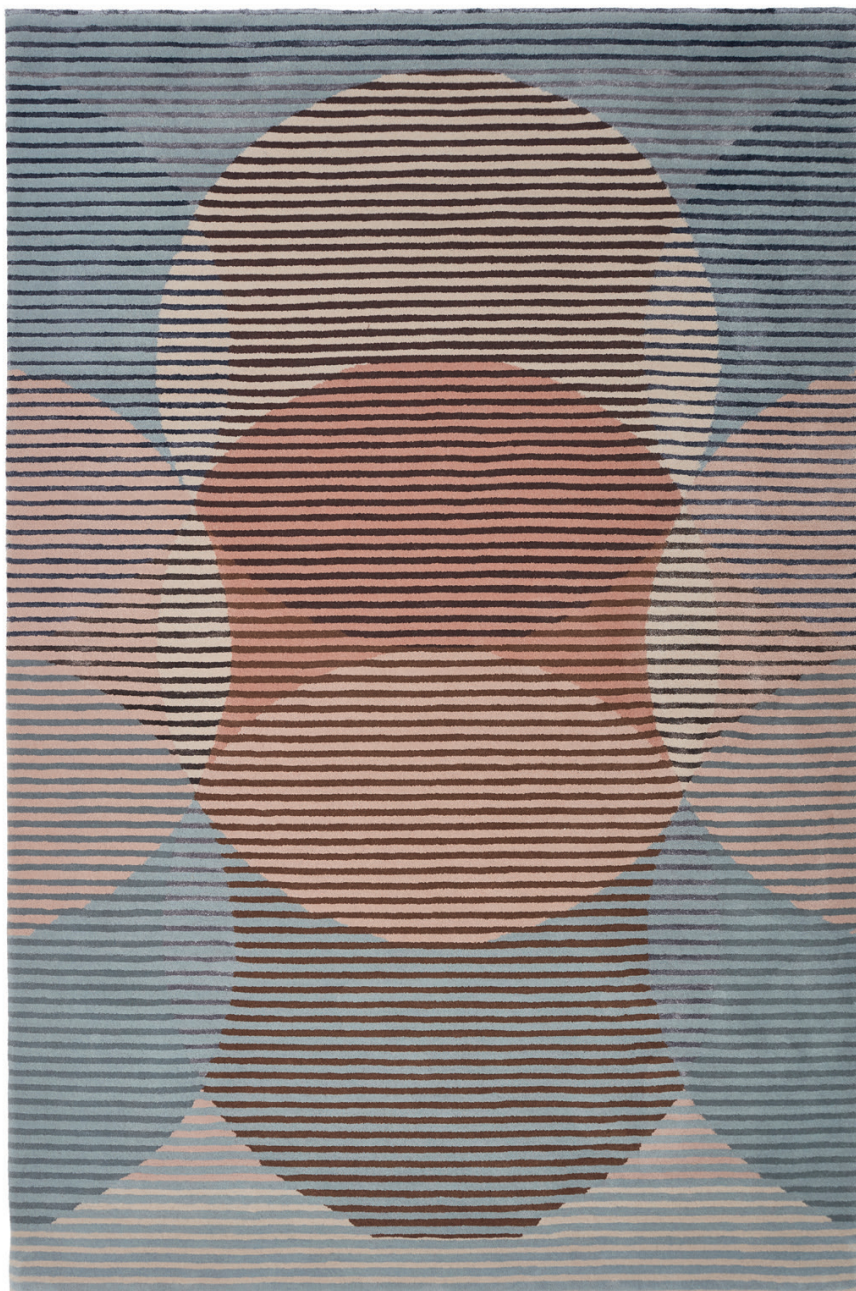


Sinking circles grey
designed by Alicja Palys
Handtufted collection



Caratteristiche

TECNICA: taftato a mano. COMPOSIZIONE: lana e viscosa.
ALTEZZA DEL PELO: 10 mm. DIMENSIONE: 200×290 cm.
TEMPI DI PRODUZIONE: 10/12 settimane. AREA DI PRODUZIONE: India.

Features

TECHNIQUE: handtufted. PILE COMPOSITION: wool and viscose.
PILE HEIGHT: 10 mm. SIZE: 200×290 cm. LEAD TIME: 10/12 weeks.
PRODUCTION AREA: India.

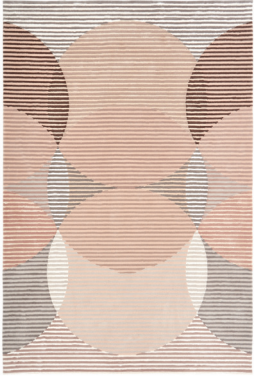


**Personalizzabile.
Customizable.**



**Taftato a mano.
Handtufted.**

Della stessa serie: From the same series:



Sinking circles nude