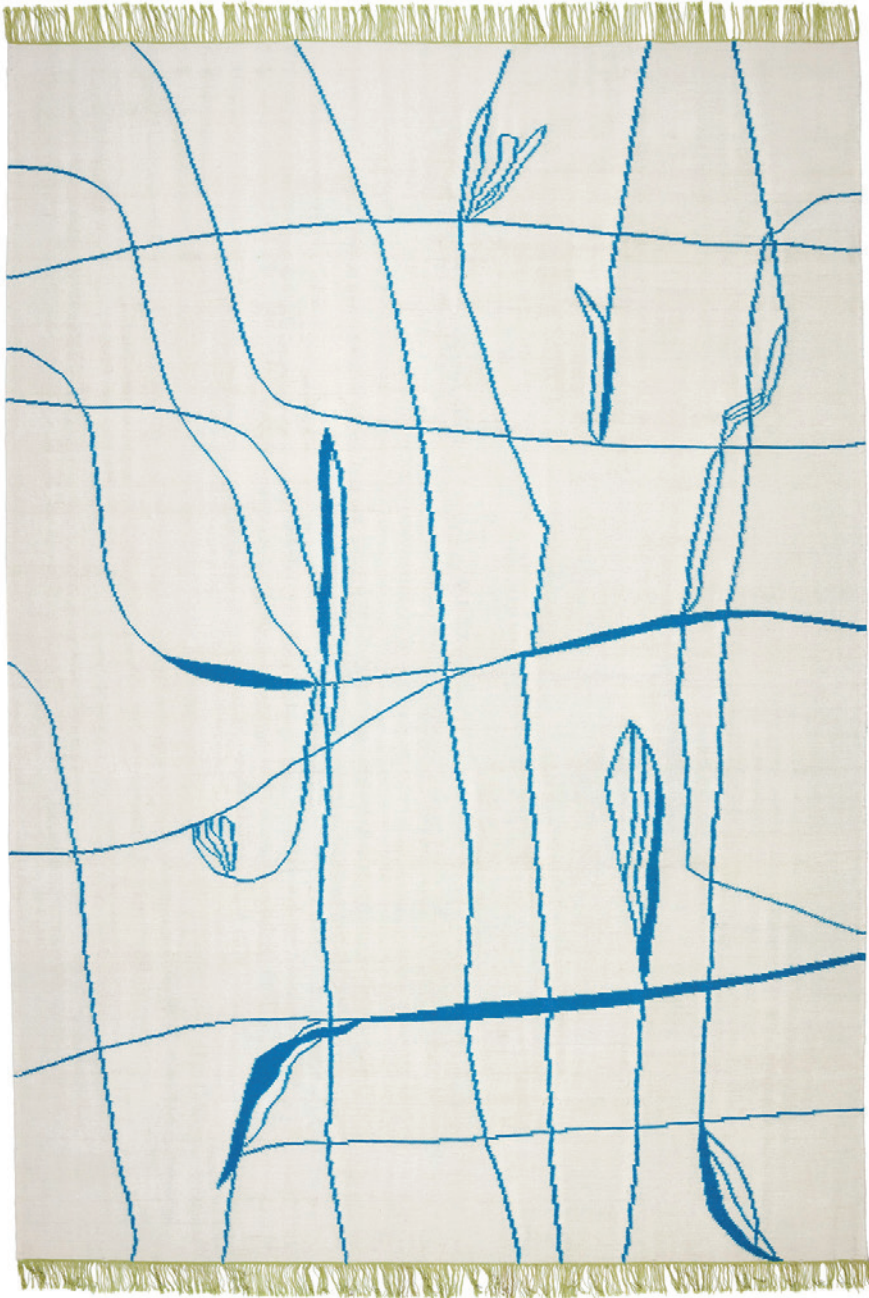


Ravie vert
designed by Elena Barenghi
Enjoy collection



Caratteristiche

TECNICA: annodato a mano. QUALITÀ: 45 trama piatta. COMPOSIZIONE: lana.
ALTEZZA DEL PELO: 5 mm. DIMENSIONE: 200×300 cm.
TEMPI DI PRODUZIONE: 12 settimane. AREA DI PRODUZIONE: India.

Features

TECHNIQUE: handknotted. QUALITY: flat weave.
PILE COMPOSITION: wool. PILE HEIGHT: 5 mm. SIZE: 200×300 cm.
LEAD TIME: 12 weeks. PRODUCTION AREA: India.



**Personalizzabile.
Customizable.**

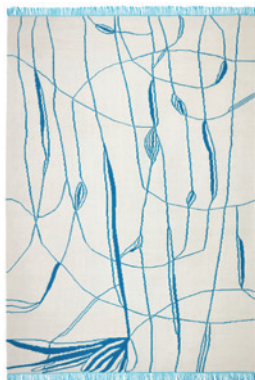


**Annodato a mano.
Handknotted.**

Della stessa serie: From the same series:



Ravie blanc



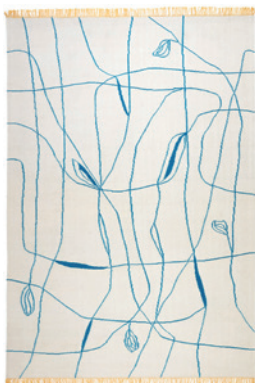
Ravie bleu



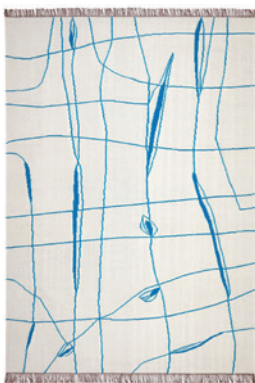
Ravie bleu clair



Ravie gris



Ravie jaune



Ravie moka



Ravie orange



Ravie rose



Ravie rouge