



**Caratteristiche**

TECNICA: annodato a mano. QUALITÀ: 100 nodi/pollice<sup>2</sup>.  
COMPOSIZIONE: lana. ALTEZZA DEL PELO: 8 mm. DIMENSIONE: Ø 200 cm.  
TEMPI DI PRODUZIONE: 12/14 settimane. AREA DI PRODUZIONE: Nepal.

**Features**

TECHNIQUE: handknotted. QUALITY: 100 knots/inch<sup>2</sup>.  
PILE COMPOSITION: wool. PILE HEIGHT: 8 mm. SIZE: Ø 200 cm.  
LEAD TIME: 12/14 weeks. PRODUCTION AREA: Nepal.



**Personalizzabile.  
Customizable.**

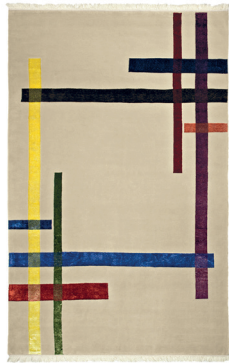


**Annodato a mano.  
Handknotted.**

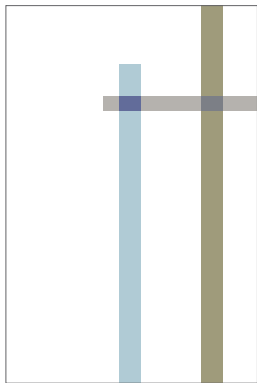
Della stessa serie: From the same series:



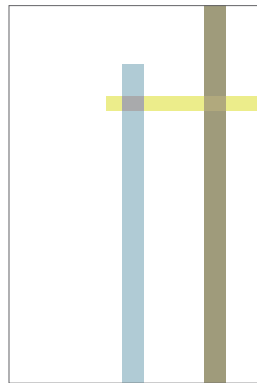
Complementare



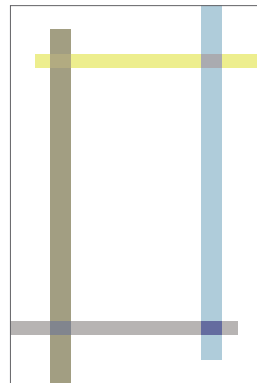
Complementare 2



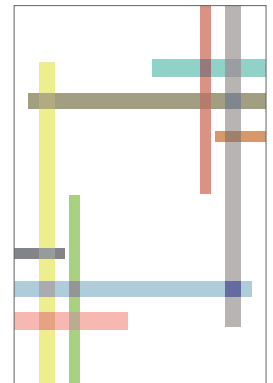
Complementare 1



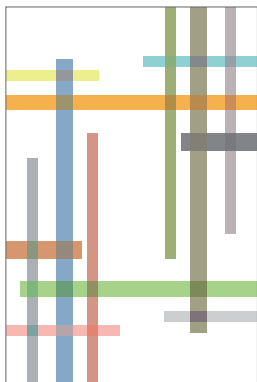
Complementare 3



Complementare 4



Complementare 5



Complementare 6